



MINISTRY OF
EDUCATION
GOVERNMENT OF INDIA

District Report Card for Aspirational Districts

BARAMULA (Jammu & Kashmir)

Percentage of student
performing below basic

13%



INTRODUCTION

The District Report Card (DRC) presents the academic achievement of school students at the District Level along with the participation rate of students and schools in the National Achievement Survey (NAS). The DRC communicates the findings of the NAS for classes III, V, VIII and X.



MINISTRY OF
EDUCATION
GOVERNMENT OF INDIA

NAS 2017

National Achievement Survey
Class III, V, VIII and X

District Report Card for Aspirational Districts BARAMULA (Jammu & Kashmir)

विद्यया ऽ मृतमश्नुते



एन सी ई आर टी
NCERT

राष्ट्रीय शैक्षिक अनुसंधान और प्रशिक्षण परिषद्
NATIONAL COUNCIL OF EDUCATIONAL RESEARCH AND TRAINING

ISBN 978-93-91444-91-4

NAS 2017-18

Classes III, V, VIII and X

District Report Card for Aspirational Districts BARAMULA (Jammu & Kashmir)

First Edition

October 2021 Ashwina 1943

© National Council of Educational Research and Training, 2021

All rights reserved. No part of this report may be reproduced in any form or by any electronic or mechanical means – except in the case of brief quotations embodied in articles or reviews – without written permission from its publisher.




Unpriced — Printed Digitally

Published at the NAS Cell by Secretary, National Council of Educational Research and Training, Sri Aurobindo Marg, New Delhi 110016.

Highlights




Class
3

Performance of students
(in percent correct)

-  **69%** (EVS)
-  **74%** (Language) and
-  **70%** (Mathematics)





Class
5

Performance of students
(in percent correct)

-  **64%** (EVS)
-  **64%** (Language) and
-  **65%** (Mathematics)






Class
8

Performance of students
(in percent correct)

-  **45%** (Language)
-  **41%** (Mathematics)
-  **42%** (Science) and
-  **37%** (Social Science)

Class
10

Performance of students
(in percent correct)

-  **29%** (Modern Indian Language)
-  **37%** (English)
-  **29%** (Mathematics)
-  **32%** (Science) and
-  **35%** (Social Science)

Participation

Class 3, 5 and 8

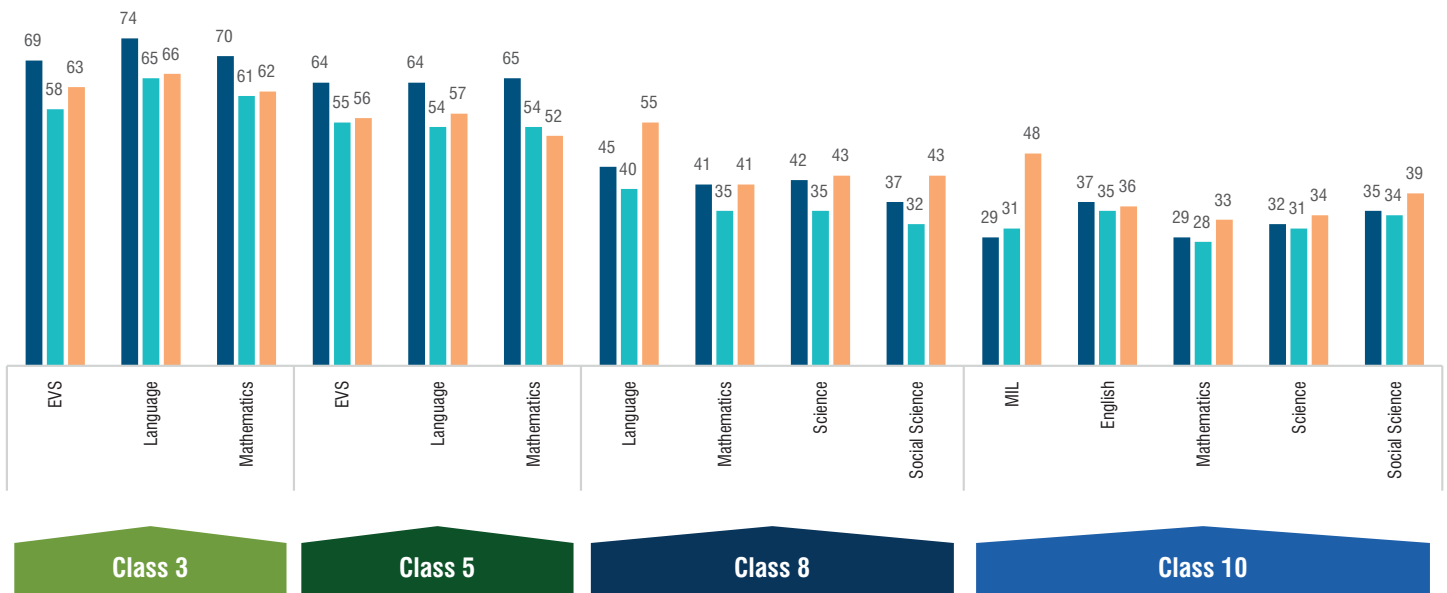


Class 10

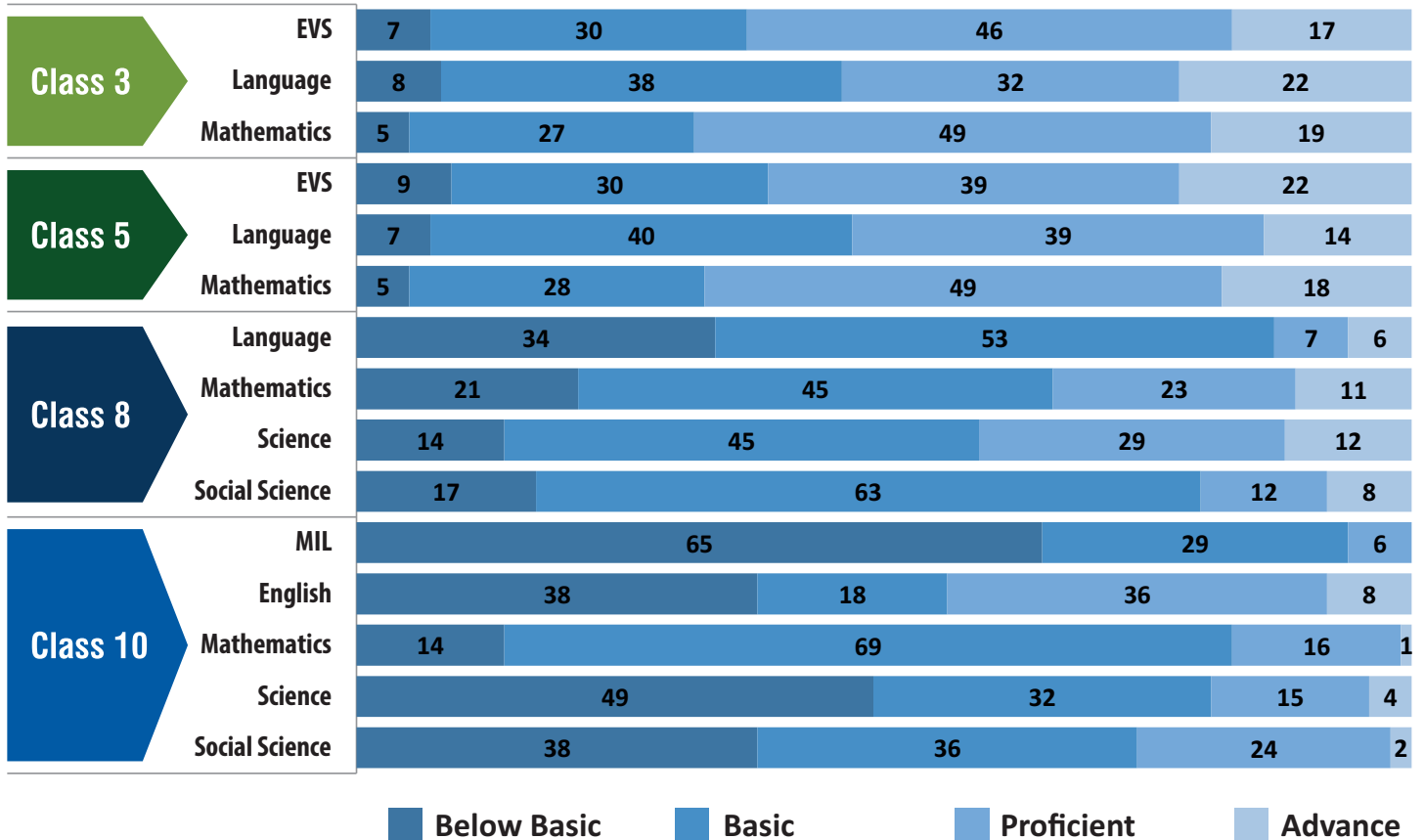


Average Achievement (in percent correct)

■ District Average ■ State Average ■ National Average



Percentage of Students by Performance Level



■ Below Basic ■ Basic ■ Proficient ■ Advance



Performance by Gender

| | | Class 3 | | Class 5 | | Class 8 | | Class 10 | |
|------------------|----------|---------|-------|---------|-------|---------|-------|----------|-------|
| | | Boys | Girls | Boys | Girls | Boys | Girls | Boys | Girls |
| EVS | District | 71 | 68 | 63 | 64 | -- | -- | -- | -- |
| | State | 58 | 58 | 54 | 55 | -- | -- | -- | -- |
| | National | 63 | 63 | 55 | 56 | -- | -- | -- | -- |
| Language/English | District | 75 | 73 | 63 | 64 | 46 | 44 | 37 | 37 |
| | State | 65 | 65 | 54 | 54 | 41 | 39 | 34 | 35 |
| | National | 66 | 67 | 56 | 57 | 55 | 56 | 36 | 37 |
| Mathematics | District | 73 | 68 | 66 | 64 | 41 | 41 | 29 | 28 |
| | State | 62 | 60 | 54 | 54 | 35 | 34 | 29 | 28 |
| | National | 62 | 62 | 52 | 52 | 41 | 41 | 34 | 33 |
| Science | District | -- | -- | -- | -- | 43 | 42 | 33 | 32 |
| | State | -- | -- | -- | -- | 36 | 33 | 31 | 31 |
| | National | -- | -- | -- | -- | 43 | 43 | 34 | 34 |
| Social Science | District | -- | -- | -- | -- | 37 | 38 | 35 | 36 |
| | State | -- | -- | -- | -- | 32 | 30 | 34 | 34 |
| | National | -- | -- | -- | -- | 42 | 43 | 39 | 39 |
| MIL | District | -- | -- | -- | -- | -- | -- | 27 | 30 |
| | State | -- | -- | -- | -- | -- | -- | 31 | 31 |
| | National | -- | -- | -- | -- | -- | -- | 47 | 49 |



Performance by Location

| | | Class 3 | | Class 5 | | Class 8 | | Class 10 | |
|------------------|----------|---------|-------|---------|-------|---------|-------|----------|-------|
| | | Rural | Urban | Rural | Urban | Rural | Urban | Rural | Urban |
| EVS | District | 69 | -- | 63 | 75 | -- | -- | -- | -- |
| | State | 58 | 61 | 55 | 54 | -- | -- | -- | -- |
| | National | 69 | 73 | 61 | 56 | -- | -- | -- | -- |
| Language/English | District | 74 | -- | 63 | 71 | 45 | 45 | 35 | 48 |
| | State | 64 | 68 | 54 | 53 | 40 | 45 | 34 | 40 |
| | National | 74 | 70 | 61 | 58 | 54 | 53 | 33 | 43 |
| Mathematics | District | 70 | -- | 64 | 89 | 41 | 41 | 28 | 33 |
| | State | 61 | 64 | 54 | 54 | 35 | 35 | 28 | 31 |
| | National | 72 | 72 | 67 | 62 | 43 | 35 | 29 | 39 |
| Science | District | -- | -- | -- | -- | 42 | 38 | 31 | 39 |
| | State | -- | -- | -- | -- | 35 | 36 | 31 | 34 |
| | National | -- | -- | -- | -- | 44 | 40 | 34 | 37 |
| Social Science | District | -- | -- | -- | -- | 37 | 37 | 35 | 39 |
| | State | -- | -- | -- | -- | 32 | 35 | 33 | 38 |
| | National | -- | -- | -- | -- | 44 | 45 | 36 | 41 |
| MIL | District | -- | -- | -- | -- | -- | -- | 28 | 32 |
| | State | -- | -- | -- | -- | -- | -- | 30 | 35 |
| | National | -- | -- | -- | -- | -- | -- | 37 | 40 |



Performance by Management

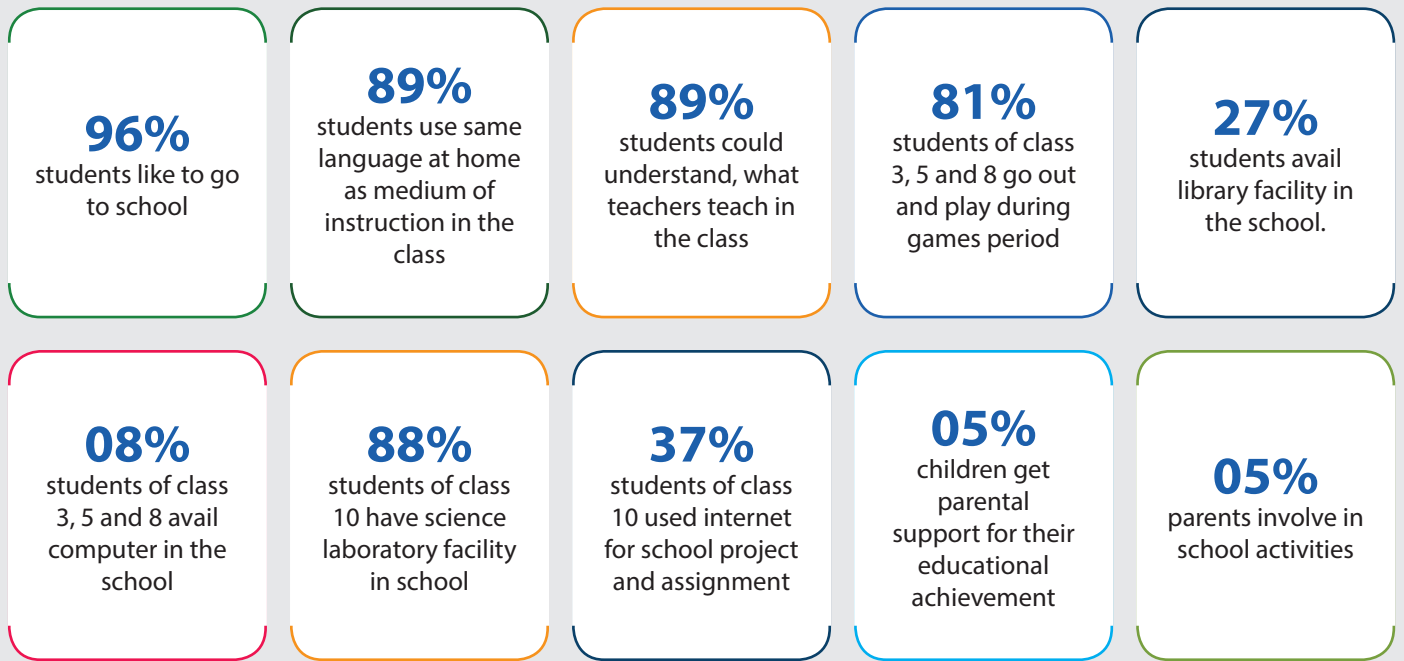
| | | Class 3 | | Class 5 | | Class 8 | | Class 10 | | |
|------------------|----------|---------|-------------|---------|-------------|---------|-------------|----------|-------------|---------|
| | | Govt. | Govt. Aided | Govt. | Govt. Aided | Govt. | Govt. Aided | Govt. | Govt. Aided | Private |
| EVS | District | 48 | -- | 47 | -- | -- | -- | -- | -- | -- |
| | State | 62 | 60 | 55 | 60 | -- | -- | -- | -- | -- |
| | National | 63 | 41 | 56 | 35 | -- | -- | -- | -- | -- |
| Language/English | District | 56 | -- | 47 | -- | 53 | -- | 30 | -- | 44 |
| | State | 67 | 66 | 58 | 62 | 53 | 63 | 32 | 33 | 42 |
| | National | 66 | 43 | 57 | 37 | 55 | 41 | 28 | 21 | 42 |
| Mathematics | District | 52 | -- | 45 | -- | 43 | -- | 25 | -- | 29 |
| | State | 61 | 63 | 50 | 54 | 35 | 42 | 29 | 30 | 31 |
| | National | 63 | 41 | 52 | 33 | 41 | 29 | 27 | 20 | 36 |
| Science | District | -- | -- | -- | -- | 40 | -- | 25 | -- | 33 |
| | State | -- | -- | -- | -- | 40 | 41 | 31 | 29 | 35 |
| | National | -- | -- | -- | -- | 43 | 30 | 28 | 21 | 36 |
| Social Science | District | -- | -- | -- | -- | 38 | -- | 29 | -- | 39 |
| | State | -- | -- | -- | -- | 38 | 38 | 35 | 34 | 39 |
| | National | -- | -- | -- | -- | 43 | 30 | 32 | 23 | 41 |
| MIL | District | -- | -- | -- | -- | -- | -- | 26 | -- | 29 |
| | State | -- | -- | -- | -- | -- | -- | 43 | 47 | 37 |
| | National | -- | -- | -- | -- | -- | -- | 37 | 28 | 52 |



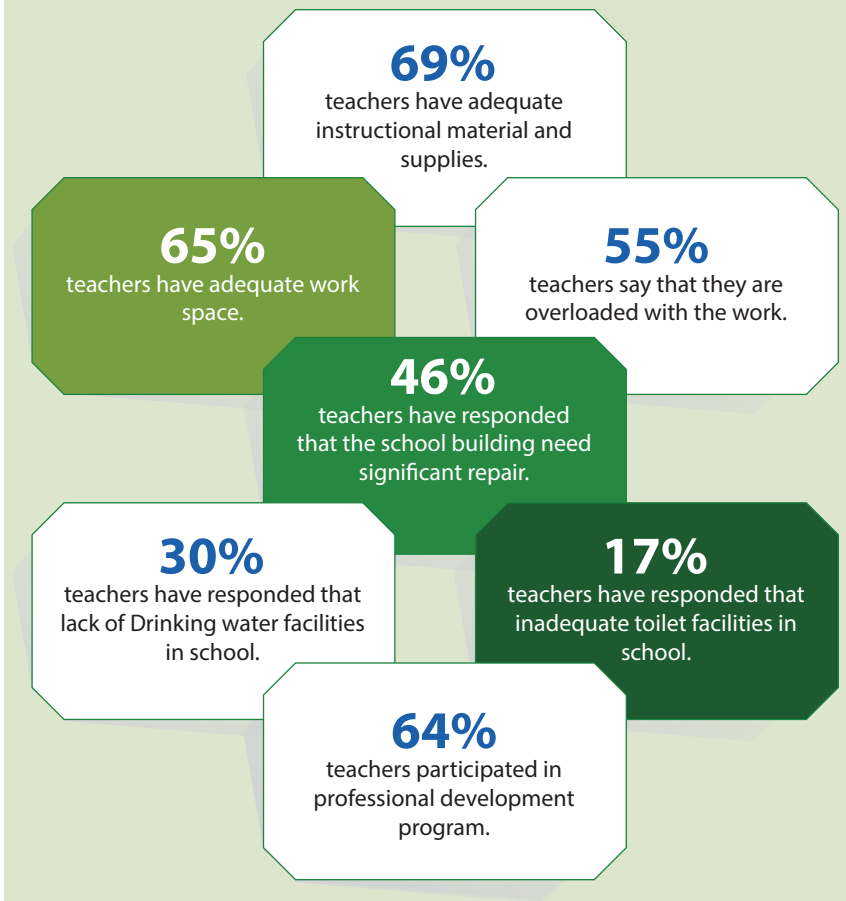
Performance by Social Group

| | | Class 3 | | | | Class 5 | | | | Class 8 | | | | Class 10 | | | | |
|------------------|----------|---------|----|-----|------|---------|----|-----|------|---------|----|-----|------|----------|----|-----|------|----|
| | | SC | ST | OBC | Oth. | SC | ST | OBC | Oth. | SC | ST | OBC | Oth. | SC | ST | OBC | Oth. | |
| EVS | District | 69 | 64 | 73 | 69 | -- | 64 | 62 | 65 | -- | -- | -- | -- | -- | -- | -- | -- | -- |
| | State | 64 | 56 | 57 | 58 | 55 | 53 | 52 | 56 | -- | -- | -- | -- | -- | -- | -- | -- | -- |
| | National | 63 | 61 | 64 | 64 | 55 | 54 | 56 | 57 | -- | -- | -- | -- | -- | -- | -- | -- | -- |
| Language/English | District | 80 | 68 | 80 | 72 | -- | 61 | 61 | 66 | 27 | 32 | 38 | 49 | 35 | 34 | 36 | 41 | |
| | State | 69 | 63 | 65 | 66 | 56 | 52 | 52 | 55 | 38 | 39 | 39 | 42 | 33 | 31 | 35 | 37 | |
| | National | 66 | 64 | 67 | 67 | 56 | 56 | 57 | 58 | 55 | 52 | 57 | 58 | 34 | 34 | 36 | 39 | |
| Mathematics | District | 79 | 66 | 77 | 69 | -- | 66 | 61 | 66 | 33 | 28 | 33 | 44 | 19 | 29 | 29 | 30 | |
| | State | 68 | 60 | 60 | 62 | 53 | 53 | 52 | 55 | 32 | 33 | 36 | 36 | 27 | 27 | 27 | 29 | |
| | National | 62 | 60 | 63 | 64 | 52 | 50 | 53 | 54 | 40 | 39 | 41 | 42 | 32 | 31 | 34 | 36 | |
| Science | District | -- | -- | -- | -- | -- | -- | -- | -- | 20 | 33 | 38 | 44 | 21 | 37 | 33 | 31 | |
| | State | -- | -- | -- | -- | -- | -- | -- | -- | 34 | 34 | 35 | 36 | 29 | 29 | 31 | 32 | |
| | National | -- | -- | -- | -- | -- | -- | -- | -- | 42 | 41 | 44 | 44 | 33 | 33 | 34 | 35 | |
| Social Science | District | -- | -- | -- | -- | -- | -- | -- | -- | 27 | 32 | 34 | 39 | 23 | 28 | 36 | 35 | |
| | State | -- | -- | -- | -- | -- | -- | -- | -- | 32 | 31 | 31 | 33 | 30 | 32 | 33 | 35 | |
| | National | -- | -- | -- | -- | -- | -- | -- | -- | 42 | 40 | 43 | 44 | 38 | 38 | 39 | 41 | |
| MIL | District | -- | -- | -- | -- | -- | -- | -- | -- | -- | -- | -- | -- | 28 | 30 | 28 | 29 | |
| | State | -- | -- | -- | -- | -- | -- | -- | -- | -- | -- | -- | -- | 30 | 30 | 31 | 32 | |
| | National | -- | -- | -- | -- | -- | -- | -- | -- | -- | -- | -- | -- | 47 | 45 | 49 | 51 | |

What Children say about Schools?



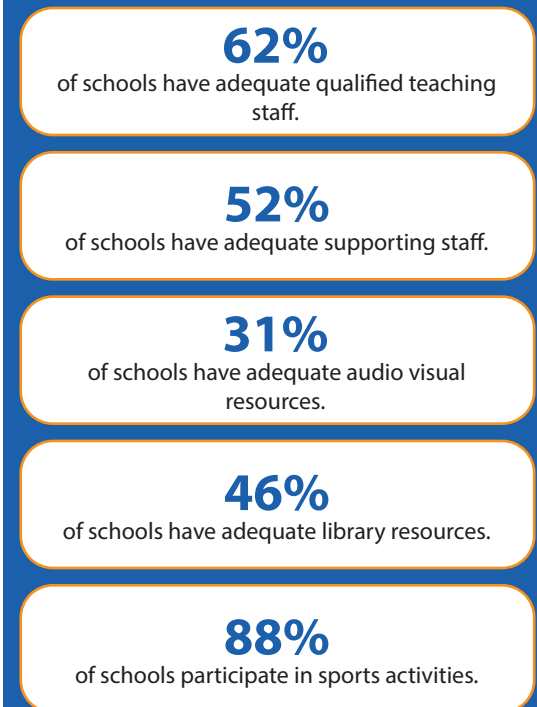
What teachers responded about school?



54%

Students attended pre-primary classes/anganwadi

What head teacher responded about school ?



Performance of the District in Learning Outcomes (LOs)

Class 3

| LO Code | Learning Outcomes for Class 3 | Average Performance (in percent) |
|-------------|---|----------------------------------|
| Language | | |
| L304 | Reads small texts with comprehension i.e., identifies main ideas, details, sequence and draws conclusions | 73 |
| L312 | Reads printed scripts on the classroom walls: poems, posters, charts etc | 72 |
| Mathematics | | |
| M301 | Reads and writes numbers up to 999 using place value | 70 |
| M302 | Compares numbers up to 999 based on their place values | 78 |
| M303 | Solves simple daily life problems using addition and subtraction of three digit numbers with and without regrouping | 64 |
| M304 | Constructs and uses the multiplication facts (up till 10) in daily life situations | 74 |
| M305 | Analyses and applies an appropriate number operation in the situation/ context | 69 |
| M306 | Explains the meaning of division facts by equal grouping/sharing and finds it by repeated subtraction | 67 |
| M309 | Identifies and makes 2D-shapes by paper folding, paper cutting on the dot grid, using straight lines etc. | 86 |
| M311 | Fills a given region leaving no gaps using a tile of a given shape | 38 |
| M312 | Estimates and measures length and distance using standard units like centimetres or metres & identifies relationships | 33 |
| M317 | Reads the time correctly to the hour using a clock/watch | 78 |
| M318 | Extends patterns in simple shapes and numbers | 65 |
| M319 | Records data using tally marks, represents pictorially and draws conclusions | 85 |
| EVS | | |
| E302 | Identifies simple features (e.g. movement, at places found/ kept, eating habits, sounds) of animals and birds in the immediate surroundings. | 56 |
| E303 | Identifies relationships with and among family members | 72 |
| E304 | Identifies objects, signs (vessels, stoves, transport, means of communication, transport, signboards), places (types of houses/shelters, bus stand, petrol pump) activities (works people do, cooking processes) at home/school/neighbourhood | 74 |
| E305 | Describes need of food for people of different age groups, animals/birds, availability of food and water and use of water at home and surroundings | 77 |
| E307 | Groups objects, birds, animals, features, activities according to differences/similarities using different senses. (e.g. appearance/place of living/ food/ movement/ likes-dislikes/ any other features) | 72 |
| E309 | Identifies directions, location of objects/places in simple maps using signs/symbols/verbally | 72 |
| E310 | Guesses properties, estimates quantities of materials/activities in daily life and verifies using symbols/non-standard units. | 66 |
| E311 | Records observations, experiences, information on objects/activities/places visited in different ways and predicts patterns etc. | 43 |
| E313 | Observes rules in games (local. indoor, outdoor) | 46 |
| E314 | Voices opinion on good/bad touch , stereotypes for tasks/play/food in family w.r.t gender, misuse/wastage of food and water in family and school. | 72 |

Class 5

| LO Code | Learning Outcomes for Class 5 | Average Performance (in percent) |
|-------------|--|----------------------------------|
| Language | | |
| L504 | Reads and comprehends independently storybooks, news items/ headlines, advertisements etc. | 65 |
| L508 | Reads text with comprehension, locates details and sequence of events | 63 |
| Mathematics | | |
| M401 | Applies operations of numbers in daily life situations | 62 |
| M412 | Explores the area and perimeter of simple geometrical shapes (triangle, rectangle, square) in terms of given shape as a unit | 76 |
| M418 | Calculates time intervals/duration of familiar daily life events by using forward or backward counting/addition and subtraction | 79 |
| M421 | Represent the collected information in tables and bar graphs and draws inferences from these | 71 |
| M501 | Reads and writes numbers bigger than 1000 being used in her/his surroundings | 73 |
| M504 | Estimates sum, difference, product and quotient of numbers and verifies the same using different strategies like using standard algorithms or breaking a number and then using operation | 60 |
| M505 | Finds the number corresponding to part of a collection | 63 |
| M506 | Identifies and forms equivalent fractions of a given fraction | 58 |
| M508 | Converts fractions into decimals and vice versa | 66 |
| M509 | Classifies angles into right angle, acute angle, obtuse angle and represents the same by drawing and tracing | 68 |
| M512 | Relates different commonly used larger and smaller units of length, weight and volume and converts larger units to smaller units and vice versa | 68 |
| M513 | Estimates the volume of a solid body in known units | 55 |
| M514 | Applies the four fundamental arithmetic operations in solving problems involving money, length, mass, capacity and time intervals | 64 |
| M515 | Identifies the pattern in triangular number and square number | 55 |
| M516 | Collects data related to various daily life situations, represents it in tabular form and as bar graphs and interprets it. | 64 |
| EVS | | |
| E403 | Identifies relationship with and among family members in extended family | 67 |
| E410 | Records observations/experiences/information for objects, activities, phenomena, places visited in different ways and predicts patterns and activities/ phenomena | 69 |
| E501 | Explains the super senses and unusual features (sight, smell, hear, sleep, sound, etc.) of animals and their responses to light, sound, food etc | 62 |
| E503 | Describes the interdependence among animals, plants and humans | 65 |
| E504 | Explains the role and functions of different institutions in daily life (Bank, Panchayat, cooperatives, police station, etc.) | 73 |
| E505 | Establishes linkages among terrain, climate, resources (food, water, shelter, livelihood) and cultural life. (e.g. life in distant/difficult areas like hot/cold deserts). | 46 |
| E506 | Groups objects, materials, activities for features/properties such as shape, taste, colour, texture, sound, traits etc. | 55 |
| E507 | Traces the changes in practices, customs, techniques of past and present through coins, paintings, monuments, museum etc. and interacting with elders | 74 |

| LO Code | Learning Outcomes for Class 5 | Average Performance (in percent) |
|---------|---|----------------------------------|
| E508 | Guesses (properties, conditions of phenomena), estimates spatial quantities (distance, area, volume, weight etc.) and time in simple standard units and verifies using simple tools/set ups | 56 |
| E509 | Records observations/experiences/information in an organized manner (e.g. in tables/ sketches/ bar graphs/ pie charts) and predicts patterns in activities/phenomena to establish relation between cause and effect | 63 |
| E510 | Identifies signs, directions, location of different objects/landmarks of a locality /place visited in maps and predicts directions w.r.t. positions at different places for a location | 68 |
| E512 | Voices opinions on issues observed/experienced and relates practices /happenings to larger issues of society. | 59 |
| E513 | Suggests ways for hygiene, health, managing waste, disaster/emergency situations and protecting/saving resources | 73 |

Class 8

| LO Code | Learning Outcomes for Class 8 | Average Performance (in percent) |
|-------------|--|----------------------------------|
| Language | | |
| L813 | Read textual/non-textual materials with comprehension and identifies the details, characters, main idea and sequence of ideas and events while reading | 45 |
| Mathematics | | |
| M601 | Solves problems involving large numbers by applying appropriate operations | 42 |
| M606 | Solves problems on daily life situations involving addition and subtraction of fractions / decimals | 45 |
| M620 | Finds out the perimeter and area of rectangular objects in the surroundings like floor of the class room, surfaces of a chalk box etc. | 42 |
| M621 | Arranges given/collected information in the form of table, pictograph and bar graph and interprets them | 26 |
| M702 | Interprets the division and multiplication of fractions | 49 |
| M705 | Solves problems related to daily life situations involving rational numbers | 47 |
| M706 | Uses exponential form of numbers to simplify problems involving multiplication and division of large numbers. | 57 |
| M707 | Adds/subtracts algebraic expressions | 38 |
| M710 | Solves problems related to conversion of percentage to fraction and decimal and vice versa | 28 |
| M717 | Finds out approximate area of closed shapes by using unit square grid/ graph sheet | 30 |
| M719 | Finds various representative values for simple data from her/his daily life contexts like mean, median and mode | 61 |
| M721 | Interprets data using bar graph such as consumption of electricity is more in winters than summer | 34 |
| M801 | Generalises properties of addition, subtraction, multiplication and division of rational numbers through patterns | 48 |
| M802 | Finds rational numbers between two given rational numbers | 15 |
| M803 | Proves divisibility rules of 2, 3,4, 5, 6, 9 and 11 | 34 |
| M804 | Finds squares, cubes, square roots and cube roots of numbers using different methods. | 41 |
| M808 | Use various algebraic identities in solving problems of daily life. | 18 |
| M812 | Verifies properties of parallelogram and establishes the relationship between them through reasoning | 32 |
| M818 | Finds surface area and volume of cuboidal and cylindrical object | 21 |
| M819 | Draws and interprets bar charts and pie charts | 54 |

| LO Code | Learning Outcomes for Class 8 | Average Performance (in percent) |
|-----------------------|--|----------------------------------|
| Science | | |
| SCI703 | Classifies materials and organisms based on properties/characteristics | 42 |
| SCI704 | Conducts simple investigation to seek answers to queries | 44 |
| SCI705 | Relates processes and phenomenon with causes | 43 |
| SCI708 | Measures and calculates e.g., temperature; pulse rate; speed of moving objects; time period of a simple pendulum, etc | 69 |
| SCI710 | Plots and interprets graphs | 36 |
| SCI711 | Constructs models using materials from surroundings and explains their working | 40 |
| SCI801 | Differentiates materials, organism and processes | 41 |
| SCI804 | Relates processes and phenomenon with causes | 29 |
| SCI805 | Explains processes and phenomenon | 36 |
| SCI807 | Measures angles of incidence and reflection, etc. | 46 |
| SCI811 | Applies learning of scientific concepts in day-to-day life | 31 |
| SCI813 | Makes efforts to protect environment | 61 |
| Social Science | | |
| SST605 | Identifies latitudes and longitudes, e.g., poles, equator, tropics, States/UTs of India and other neighbouring countries on globe and the world map | 42 |
| SST610 | Locates important historical sites, places on an outline map of India | 25 |
| SST625 | Describes the functioning of rural and urban local government bodies in sectors like health and education | 26 |
| SST703 | Explains preventive actions to be undertaken in the event of disasters | 61 |
| SST704 | Describes formation of landforms due to various factors | 5 |
| SST722 | Explains the significance of equality in democracy | 33 |
| SST726 | Describes the process of election to the legislative assembly | 55 |
| SST731 | Explains the functioning of media with appropriate examples from newspapers. | 33 |
| SST733 | Differentiates between different kinds of markets | 65 |
| SST734 | Traces how goods travel through various market places. | 60 |
| SST802 | Describes major crops, types of farming and agricultural practices in her/his own area/state | 50 |
| SST805 | Locates distribution of important minerals e.g. coal and mineral oil on the world map | 35 |
| SST807 | Justifies judicious use of natural resources | 58 |
| SST809 | Draws interrelationship between types of farming and development in different regions of the world | 12 |
| SST810 | Distinguishes the modern period from the medieval and the ancient periods through the use of sources | 49 |
| SST815 | Explains the origin, nature and spread of the revolt of 1857 and the lessons learned from it | 52 |
| SST816 | Analyses the decline of pre-existing urban centers and handicraft industries and the development of new urban centers and industries in India during the colonial period | 16 |
| SST818 | Analyses the issues related to caste, women, widow remarriage, child marriage, social reforms and the laws and policies of colonial administration towards these issues | 39 |
| SST823 | Applies the knowledge of the Fundamental Rights to find out about their violation, protection and promotion in a given situation | 26 |
| SST827 | Describes the process of making a law. (e.g. Domestic Violence Act, RTI Act, RTE Act) | 35 |
| SST831 | Identifies the role of Government in providing public facilities such as water, sanitation, road, electricity etc., and recognizes their availability | 24 |
| SST833 | Draws bar diagram to show population of different countries/India/states | 40 |

Performance of Students: Content wise

| Subjects | District Average (% correct) | State Average (% correct) | Significant Difference |
|-------------------------------------|------------------------------|---------------------------|------------------------|
| Mathematics | 29.15 | 28.36 | ↔ |
| Algebra | 30.18 | 29.98 | ↔ |
| Coordinate Geometry | 25.93 | 24.95 | ↔ |
| Mensuration | 27.77 | 28.34 | ↔ |
| Geometry | 29.78 | 27.94 | ↑ |
| Statistics | 26.26 | 26.27 | ↔ |
| Trigonometry | 27.96 | 28.47 | ↔ |
| Number System | 33.67 | 30.60 | ↑ |
| Probability | 29.74 | 27.87 | ↔ |
| SCIENCE | 32.23 | 30.73 | ↑ |
| Food | 33.28 | 30.84 | ↑ |
| Materials | 31.52 | 30.20 | ↔ |
| The world of living | 35.22 | 32.96 | ↑ |
| Moving things, people and ideas | 32.59 | 31.18 | ↔ |
| How things work | 31.14 | 29.30 | ↔ |
| Natural phenomena | 26.34 | 25.72 | ↔ |
| Natural resources | 35.56 | 36.45 | ↔ |
| SOCIAL SCIENCE | 35.28 | 33.38 | ↑ |
| Political Science | 37.74 | 36.11 | ↔ |
| History | 35.73 | 33.68 | ↑ |
| Economics | 34.96 | 32.59 | ↑ |
| Geography | 32.67 | 31.14 | ↔ |
| ENGLISH | 37.22 | 34.42 | ↑ |
| Reading Comprehension | 39.71 | 35.95 | ↑ |
| Language Element | 34.75 | 32.81 | ↑ |
| MODERN INDIAN LANGUAGE (MIL) | 33.87 | 34.25 | ↔ |
| Reading Comprehension | 33.87 | 34.25 | ↔ |

Project Team

MoE

- Smt. Anita Karwal, *Secretary, Department of School Education and Literacy (SE&L)*
- Shri. Maneesh Garg, *Joint Secretary, Department of School Education and Literacy (SE&L)*
- Shri. JP Pandey, *Director, Department of School Education and Literacy (SE&L)*

NCERT

- Prof. Sridhar Srivastava, *I/c Director, NCERT*
- Prof. Indrani Bhaduri, *Head, ESD and National Coordinator, NAS*
- Dr. Sukhvinder, *Associate Professor, ESD*
- Dr. Vishal D. Pajankar, *Assistant Professor, ESD*
- Dr. Satya Bhushan, *Assistant Professor, ESD*
- Dr. Gulfam, *Assistant Professor, ESD*

Project Supporting Staff (NCERT)

- Ms. Bhaswati De, *Data Manager*
- Mr. Sajid Khalil, *Senior Graphic Designer-cum-Visualizer*
- Mr. Puneet Bholra, *System Analyst*

State Functionaries

State Directorate of Education, SCERTs, SIEs, DIETs, Schools

For any clarification, please contact:
indranibhaduri@nationalachievementsurvey.co.in



National Achievement Survey (NAS) Cell

राष्ट्रीय शैक्षिक अनुसंधान और प्रशिक्षण परिषद्
National Council of Educational Research and Training
Sri Aurobindo Marg, New Delhi - 110016

www.ncert.nic.in